

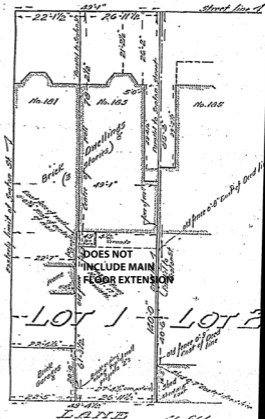
Plan Showing

PART OF LOT 1 - ON THE SOUTH SIDE OF CARLTON ST. - REG^d PLAN D-2

Toronto
Scale 1/8" = 1' 0"

CARLTON ST.

SEATON STREET



Plan of the above lot as shown
on the plan of the City of Toronto
No. 181, 185, 188
Toronto, Ont.

C. H. Brindley & Co.
100 St. James Street
Toronto, Ont.